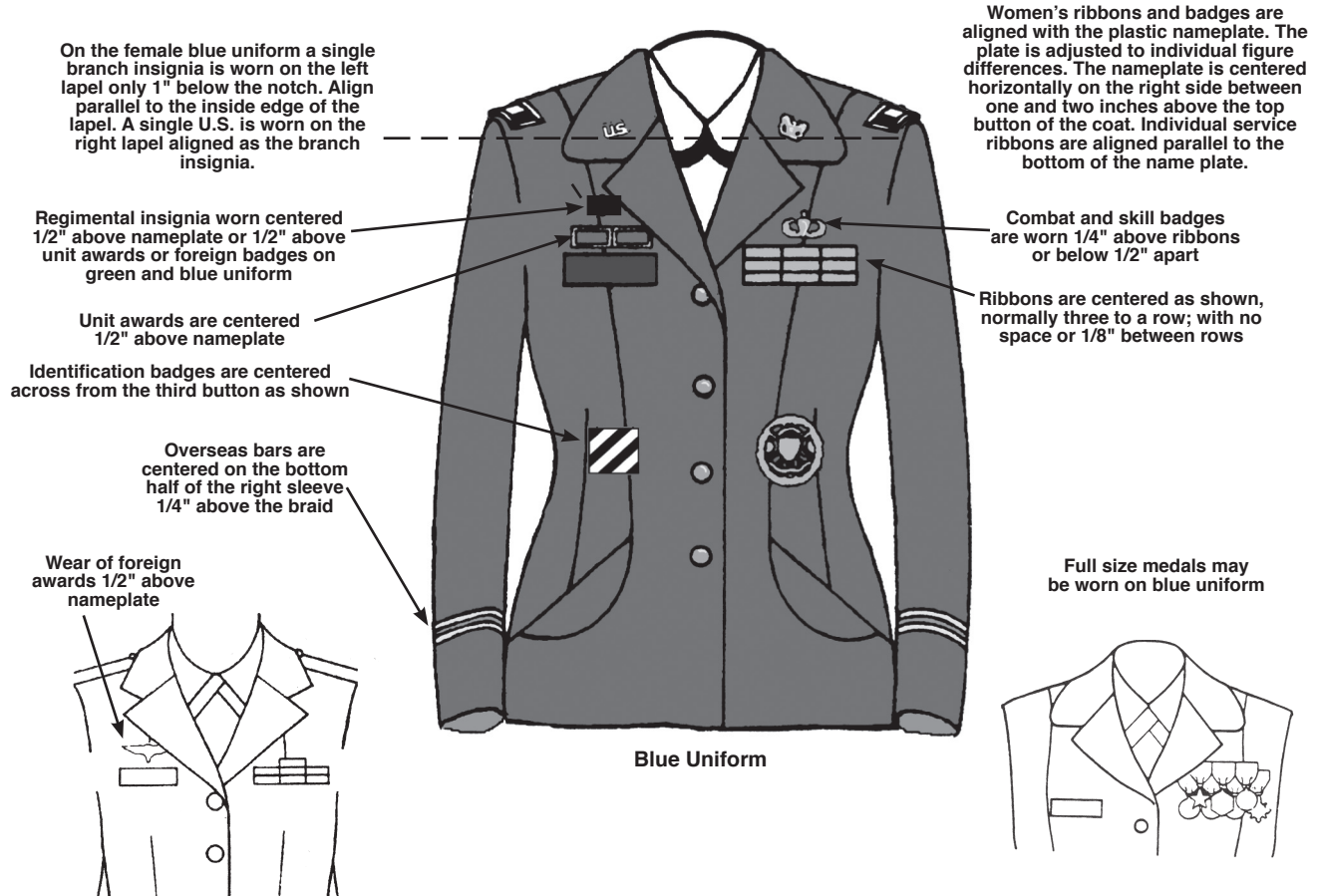


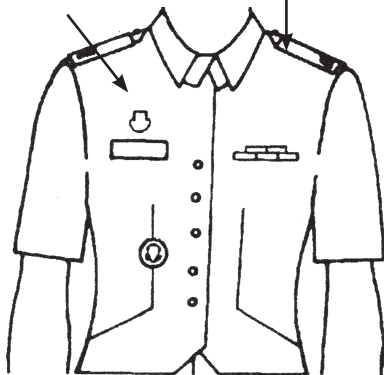
Uniform - Female Officer



Green shoulder marks obsolete as of Sept 1992

Regimental Crest are worn 1/4" above the nameplate or 1/2" above unit awards

Black shoulder marks



Up to three miniature class 1-5 combat or skill badges may be worn

Regimental insignia worn on right lapel centered 1/2" below notch.

Miniature medals are centered 1/2" below notch

